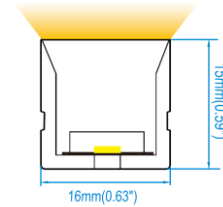
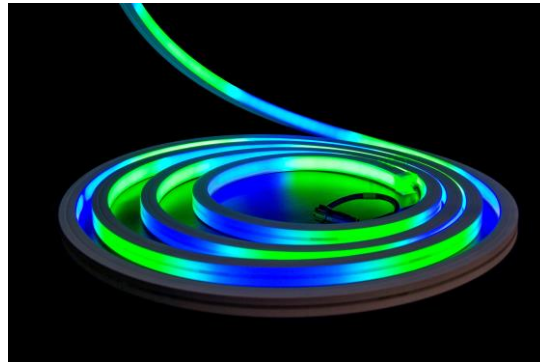


SNAKE 1615T-RGBW

TECHNICAL SPECIFICATIONS



SVL Lighting



IP67

IK10

- Vertical bending and top lighting
- Compatible with DMX512 (1990) signal protocol
- Unique optical light distribution structure design, uniform lighting surface and no shadow.
- Soldering free power feed and end cap
- UV and yellowing resistant
- Salt solution resistance, acids & alkalis, corrosive gases and fire resistance
- Anti-interference and longer distance transmission
- Addressing with editor automatically
- Ideal for commercial, hospitality and retail applications

Controllers:

- DMX512
- Zigbee RGBW Remote Controller
- RGBW Touch Controller

Dimensions:	W: 16mm x H: 15mm
Length	5m per roll or Custom-made
Cutting Increment:	125mm
Voltage:	24VDC
Power:	9.6W/M 15W/M DMX512
Trim Colour:	white silicone
CRI:	80
Colour Temp:	RGBW
Power factor:	>0.9
Lumens	R-39, G-119, B-28, W-149
Beam Angle:	120°
Pixel /M	8
Operating	-25° - +45°
Life Span:	50,000 hrs

* IES Files are available on request

Order Code	Wattage	Colour Temp
SNAT9RW3-1615	9.6w/m	RGB+W3K
SNAT15RW4-1615	15w/m	RGB+W4K



LM80



* Please contact our sales team for specific requirements and order code

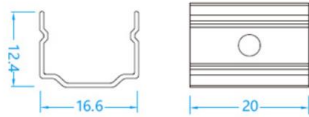
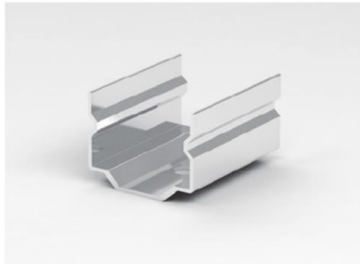


SVL Lighting

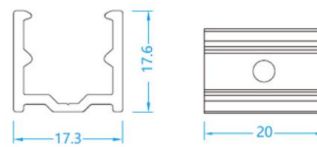
TECHNICAL SPECIFICATIONS

Accessories

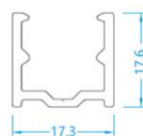
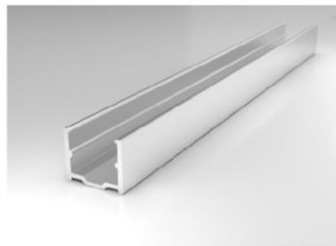
Stainless Steel Mounting clips



Aluminium Mounting clips



Aluminium Profile



Suspension Installation

