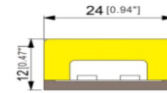


SNAKE 2412T

TECHNICAL SPECIFICATIONS



SVL Lighting



IP67

IK10

- Vertical bending and top lighting
- Dual color extrusion, diffused silicone lens and thermal conductive base
- UV and yellowing resistant
- IP67 and salt-mist proof
- UL 94 V-0
- Min. bending radius 12cm
- Extrusion and accessories are available
- Custom made length
- Ideal for commercial, hospitality and retail applications

Controllers:

- Zigbee Remote Controller
- Touch Controller
- TRIAC
- DALI
- 1-10V

| | |
|---------------------------|--|
| Dimensions: | H: 12mm W: 24mm |
| Max. Length | 10m for single end power-in |
| Cutting Increment: | 100mm |
| Voltage: | 24VDC |
| Power: | 24W/M 1000mA |
| Trim Colour: | white silicone |
| CRI: | 80 |
| Colour Temp: | 2700K/3000K/4000K/5000K/6500K BLUE, 467.5nm |
| Power factor: | >0.9 |
| Lumens | 2700K-3000K @ 1450lm/m 4000K-6500K @ 1530lm/m Blue colour @ 250 lm/m |
| Beam Angle: | 120° |
| Life Span: | up to 50,000 hrs |

* IES Files are available on request

| Order Code | Wattage | Lumen | Colour Temp |
|--------------|---------|----------|-------------|
| SNAT243-2412 | 24w | 1450lm/w | 3000K |
| SNAT243-2412 | 24w | 1530lm/w | 4000K |

* Please contact our sales team for specific requirements and order code



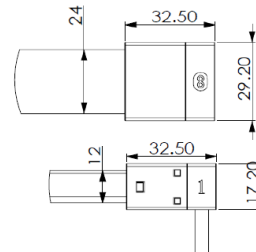
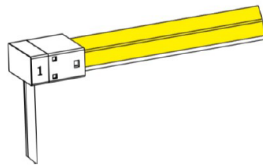
SVL Lighting

TECHNICAL SPECIFICATIONS

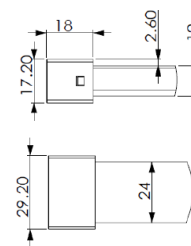
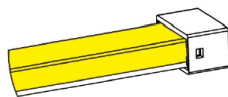
CONNECTORS:

- Soldering free power feed and end cap

Side feeder

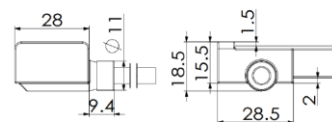
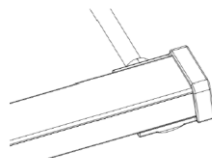


End cap

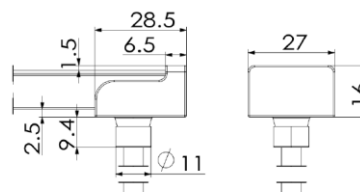
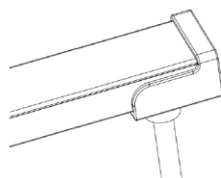


- IP67 power feed and end cap by moulding

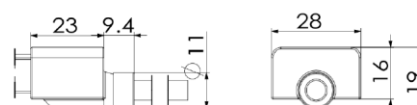
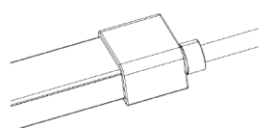
Side feeder



Bottom feeder



End feeder



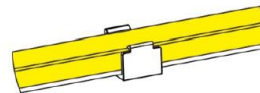
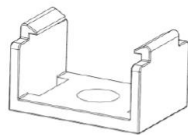


SVL Lighting

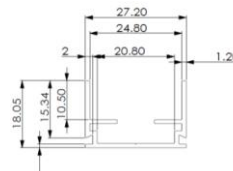
TECHNICAL SPECIFICATIONS

Installation Accessories

- Transparent clips for indoor application



- Aluminium profile for outdoor application (1 meter per pcs)



- Aluminium Clip outdoor application (50mm per pc)



- Stainless Steel installation chain (1 meter per pc)

