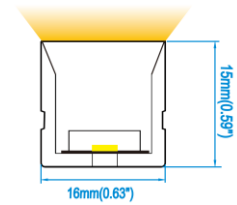


SNAKE 1615T FLX-CUT

TECHNICAL SPECIFICATIONS



SVL Lighting



24V

IP67

IK08

- Vertical bending and Top lighting
- Variable Cutting Increment
- Dual color extrusion, diffused silicone lens and thermal conductive base
- UV and yellowing resistant
- IP67 and salt-mist proof
- Extrusion and accessories are available
- Custom made length
- Ideal for commercial, hospitality and retail applications

Controllers:

- Zigbee Remote Controller
- Touch Controller
- TRIAC
- DALI
- 1-10V

Dimensions:	W: 16mm x H: 15mm
Max. Length	20m
Cutting Increment:	FLEXIBLE
Voltage:	24VDC
Power:	14.4W/M
Trim Colour:	silicone
CRI:	>80/90
Colour Temp:	3000K/4000K/6000K
Power factor:	>0.9
Lumens	3000K @ 496lm/m 4000K-6000K @ 504lm/m
Beam Angle:	120°
Life Span:	up to 50,000 hrs

* IES Files are available on request

Order Code	Wattage	Lumen	Colour Temp
SNAT143F-1615	14.4w/m	496lm/w	3000K
SNAT144F-1615	14.4w/m	504lm/w	4000K

* Please contact our sales team for specific requirements and order code



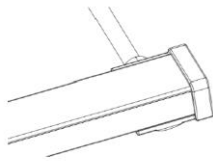
SVL Lighting

TECHNICAL SPECIFICATIONS

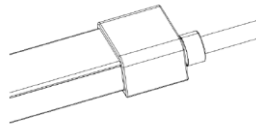
CONNECTORS:

- IP67 Power feed and end cap

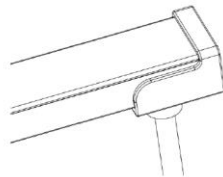
Side feeder



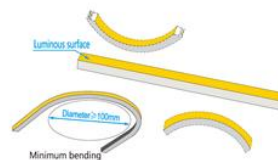
End feeder



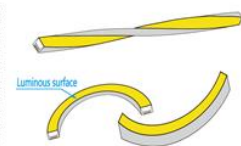
Bottom feeder



Bending Diagram



Correct bending direction and bending radius



Do not twist it or bending reversely

